



All Saints Westborough

A VISUAL GUIDE



DIOCESE OF LINCOLN
faithful • confident • joyful



THE CHURCH
OF ENGLAND

Thank you for coming to All Saints church in Westborough.

People have worshiped God in this church for over 700 years.

We hope you will stay a while and enjoy your visit.

For information about the services held regularly in All Saints, please look at our web site at

www.claypolebenefice.org

If you are able to give a donation please do so to help us maintain the fabric of this church for future generations.

This visual guide is based on the leaflet prepared by Jane Ford which is available in the church.

The guide shows items of interest and information.

The route is entrance via the north porch and then taking an anti clockwise route around the nave followed by visiting the chancel and sacristy before visiting the church grounds.

THE NAVE





Octagonal Pillars in
the aisles



Arcade Pillar

Blocked up doorway
in the West Wall.



An unusual 14th
century window ,
more typically found
in Nottinghamshire.



Painted panels of
Time and Death





13th century octagonal font with interlaced designs.



South Porch door. 15th century. The porch contains some old graffiti.

A fine 12th century foliated cross has been brought inside the church from the graveyard to preserve its striking carving.





The pulpit and reading desk are 17th century oak panelling.

The large panelled 15th century chest once held the Parish Registers.





The Royal arms above the Chancel arch are of George II and dated 1756.



The Chancel arch and screen are 15th century, except for the modern battlements on the top. The style is typical of the Midlands rather than Lincolnshire.



Two small circular openings in the north wall are thought to be remnants of the earlier Saxon church on this site.

The view from outside is shown below.



THE CHANCEL

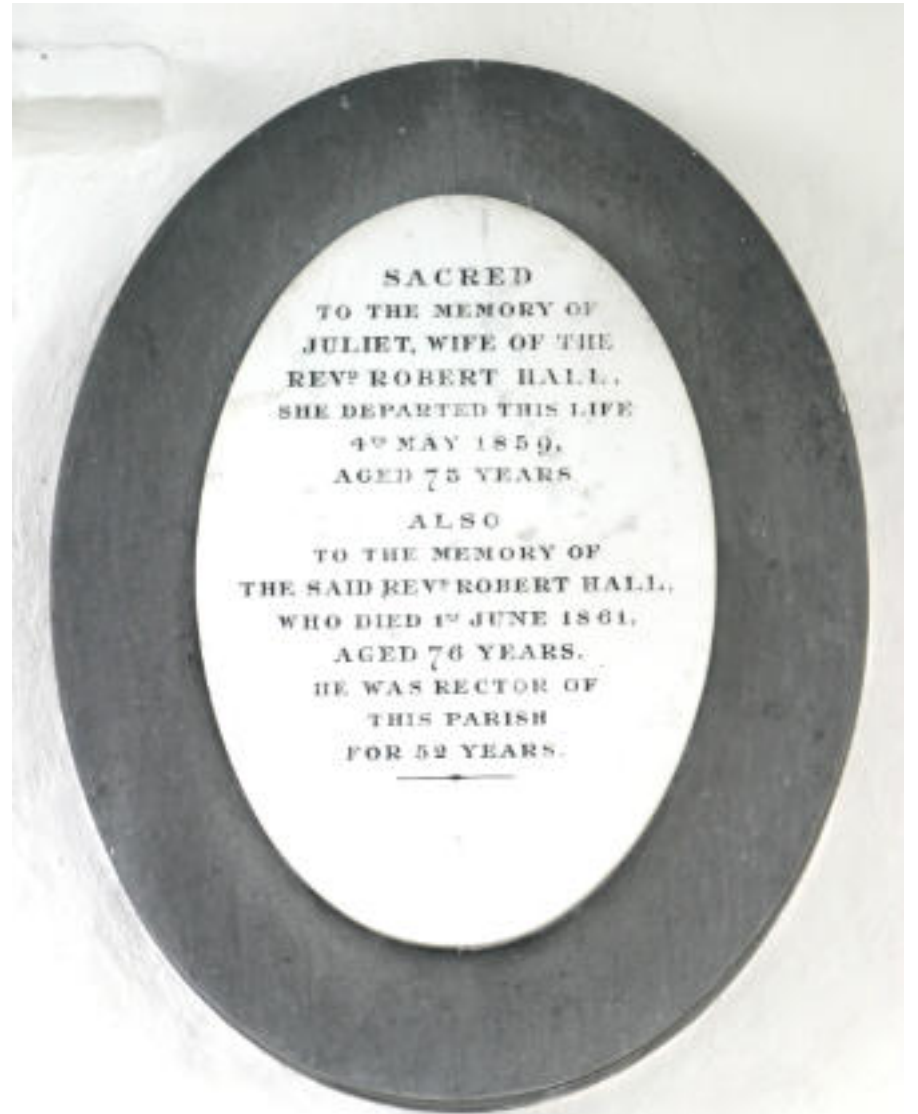
A lancet window



THE RECTORS



This Monument a Tribute of Affection
is erected to the Memory
of the Rev^d THOMAS HALL
late Rector of this Parish
by CATHERINE his Widow
He died
11 Jan Anni Dom 1801 aged 77 years
THOMAS his eldest Son
died 11 Dec 1800 aged 15 years
and SARAH his youngest Daug^r
died 9 Dec 1800 aged 5 years



SACRED
TO THE MEMORY OF
JULIET, WIFE OF THE
REV^d ROBERT HALL,
SHE DEPARTED THIS LIFE
4th MAY 1859,
AGED 75 YEARS.
ALSO
TO THE MEMORY OF
THE SAID REV^d ROBERT HALL,
WHO DIED 1st JUNE 1861,
AGED 76 YEARS.
HE WAS RECTOR OF
THIS PARISH
FOR 52 YEARS.



TO THE MEMORY OF
CATHERINE, DAUGHTER OF REV^d THOMAS HALL,
RECTOR OF THIS PARISH,
WHO DIED AUGUST 1800,
AGED LXXXVII YEARS.
ALSO OF REV^d THOMAS HALL,
ONLY SON OF REV^d ROBERT HALL AND JULIET HIS WIFE,
WHO DIED AT GRAY'S THEOBALD, ESSEX,
OCTOBER 1861, MDCCCLXI,
AGED XLII YEARS.

There are carved monuments dedicated to several generations of the Hall family who were Rectors of Westborough.



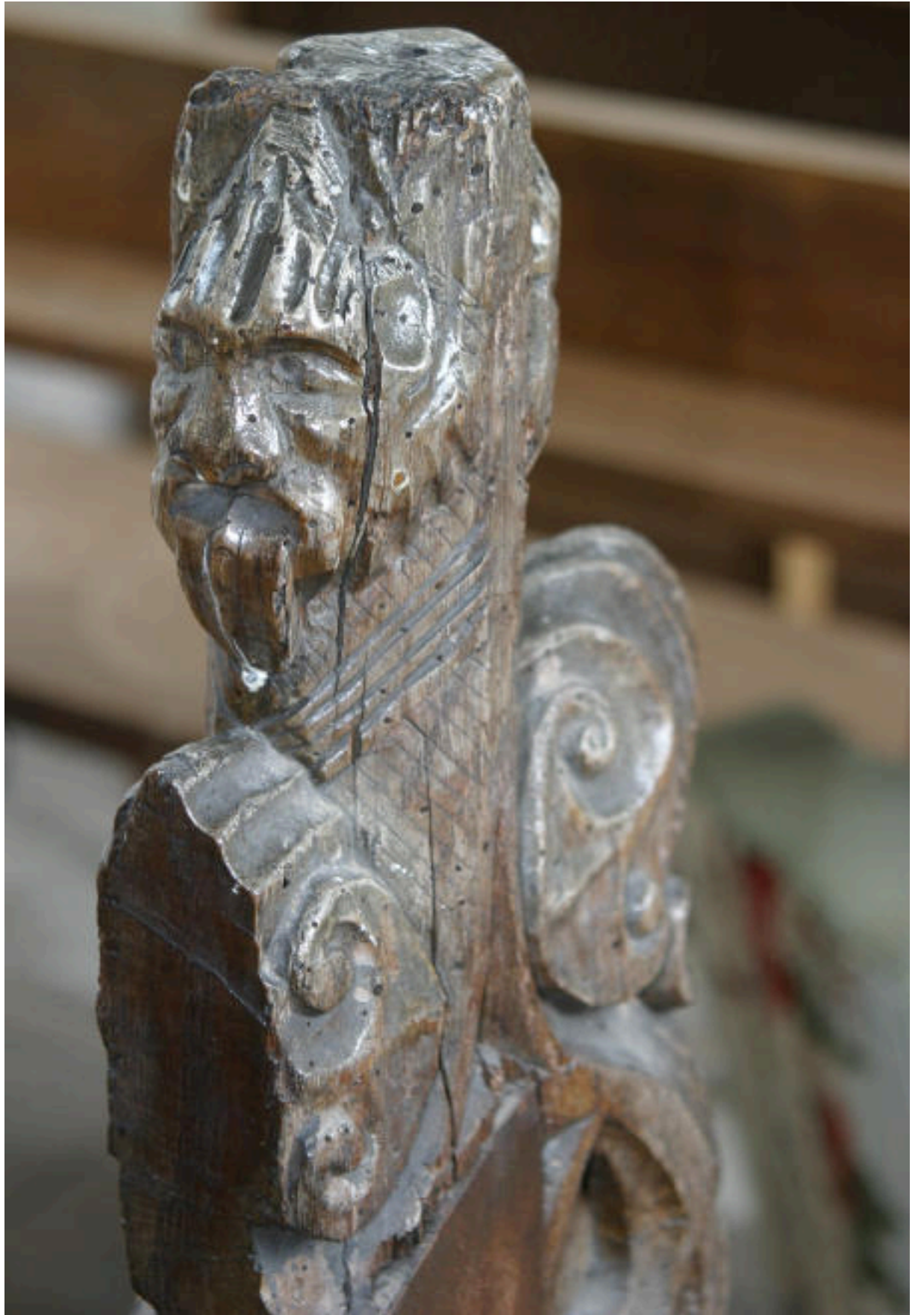
The East Window.

The original double piscina with semi circular arches seems to have been converted to a single one and has a deep fluted bowl. The three oddly crude sedilia have also lost their supports.





The pew ends show the devil licking the backs of those at prayer.





The Chancel roof originally high pitched was made flat and covered with lead until 1951 when it was made into a pitched tiled roof. The old roof timbers were left as a ceiling.

THE SACRISTY



The sacristy contains an early stone altar.



CHURCH GROUNDS



It is unusual to find a medieval cross complete with base, shaft and knop. It is thought that the capstone now lies at the north of the village. The cross was most likely used for both religious purposes, such as preaching and a central point for processions, and as a secular meeting place for the village people to hear news, proclamations and announcements.



The tower was was completed in 1752 and contains four bells by Thomas Hedderly, one is inscribed

Thomas Hedderly made us all

Good luck attend us all.



THANK YOU FOR VISITING

All Saints is one of a group of parishes in the Claypole Benefice, part of the Loveden Deanery within the Diocese of Lincoln.

Please visit the other churches in our benefice

St Peters Claypole

St James Dry Doddington

All Saints Fenton

St Martins Stubton

More information on our web site

www.claypolebenefice.org



DIOCESE OF LINCOLN
faithful • confident • joyful



THE CHURCH
OF ENGLAND